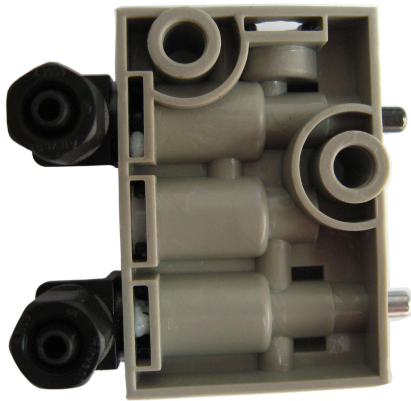
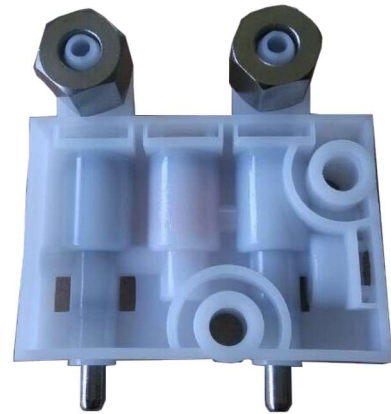


## SEAT PARTS



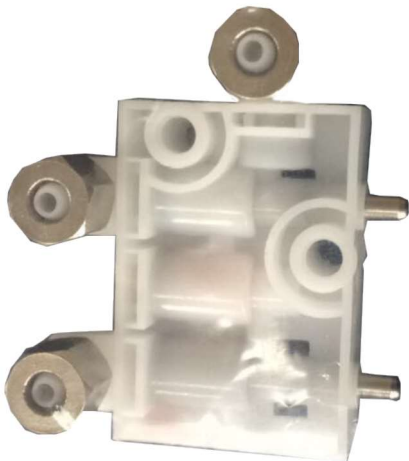
Switzerland Airvent control valve GCV01

### Control valve GCV01



Control valve CV01A made in China

### Control valve CV01A



### Control valve CV01B



Control valve CV02 made in Taiwan for KAB seat

### Control valve CV02



Control valve CV03 made in Taiwan for Grammer seat

### Control valve CV03



### C001AIR compressor set 12/24V